

ARTHREX® CONTINUOUS WAVE™ 4 SET-UP AND OPERATION



For more information consult the User's Guide and the Directions for Use supplied with the pump or tubing sets.

Arthrex, Inc.
1370 Creekside Blvd.
Naples, FL 34108-1945 USA
Toll Free: 1 (800) 934-4404
www.arthrex.com

Arthrex Tech Support:
+1-888-420-9393

Arthrex GmbH
Erwin-Hielscher-Strasse 9
81249 München, Germany
Tel: +49 89 909005-0
www.arthrex.de

+49 89 90 90 05 8800

ARTHROSCOPY PUMP ACCESSORIES

Autoclavable Remote



Foot Control



Lavage: Timed increase of pressure for improved control of bleeding.

Rinse: Timed increase of flow for improved control of debris removal. (Only available when using DualWave outflow)

Shaver Suction Toggle: Allows switching between four preset shaver suction levels. (Only available when using DualWave™ outflow)

INFLOW TUBING SET-UP

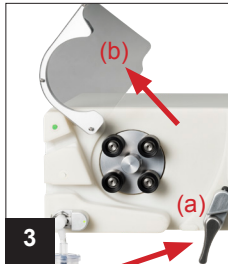
Turn on the system, and wait until the self-diagnostic testing has finished before attaching the tubing.



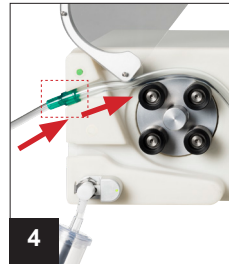
1 Remove the orange clip



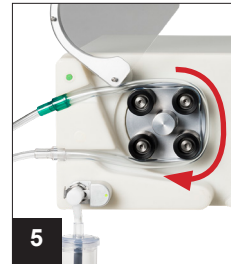
2 Insert the connector into the pump pressure coupler



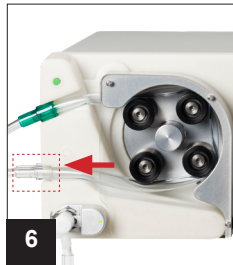
3 Unlock (a) and open the inflow door (b)



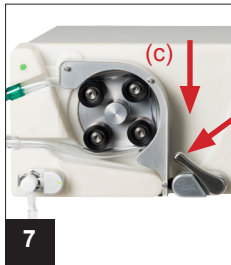
4 Insert the green tubing hub next to the green mark



5 Wrap the thicker tubing between the hubs and around the rollers



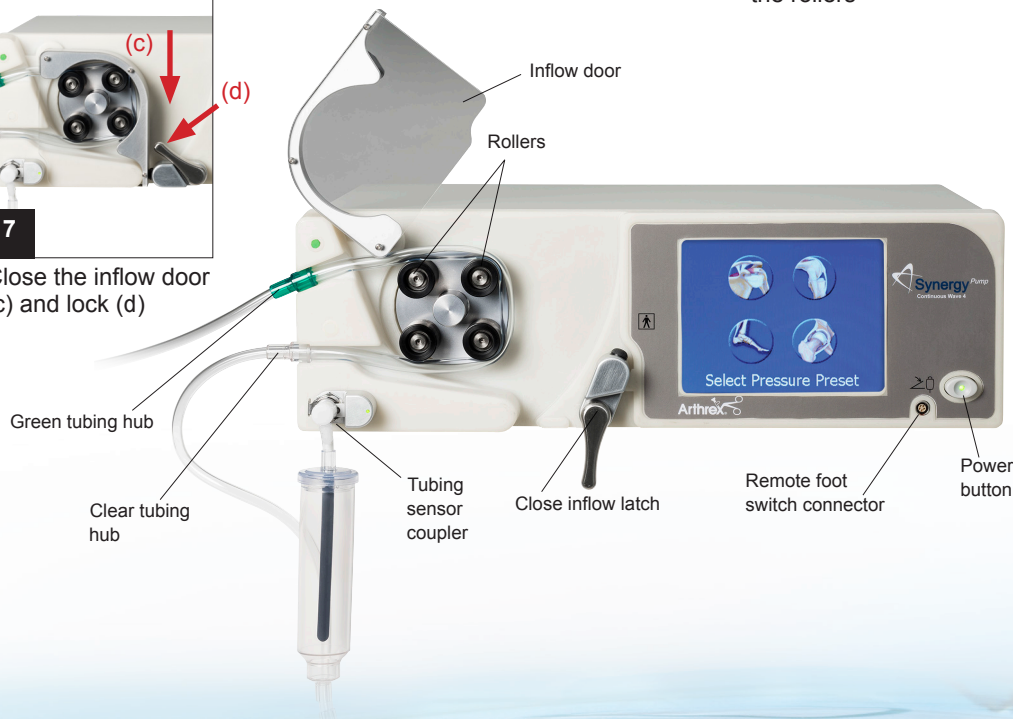
6 Stretch the thicker tubing to insert the clear tubing hub



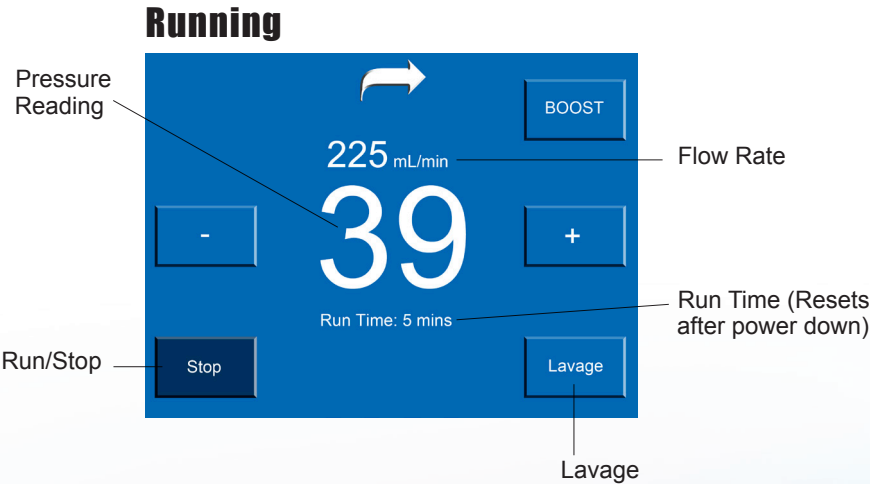
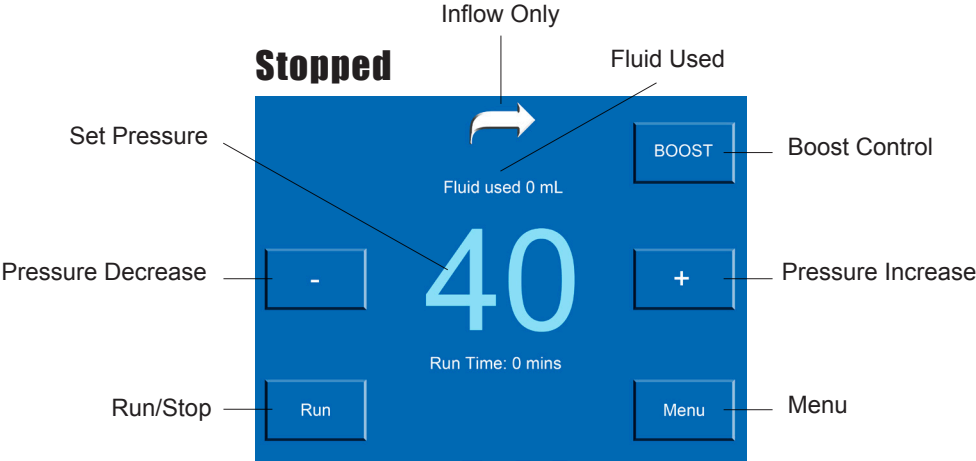
7 Close the inflow door (c) and lock (d)



8 Spike the saline bags



INFLOW ONLY USER INTERFACE



SYNERGY SHAVER DETECTION AND HEADS UP DISPLAY

NOTE: Start with all units turned off (CW4, Synergy).



1
Connect the red cable that comes with the CW4 to the rear of the Synergy Resection Console



2
Power on the Synergy Resection Console



3
Power on the CW4



4
*Connect to the Synergy imaging console for the heads up display

**For the Synergy heads up display use the AR-3200-1040 accessory cable kit to connect the CW4 to camera console. (Only 1 cable is needed to connect the CW4 to the camera console. See IFU 950-0052-00 for more detail.)*



TROUBLESHOOTING

PROBLEM	SOLUTION
Tubing Out *	<ol style="list-style-type: none"> 1. Tubing sensor indicator is not seated 2. Ensure that the tubing sensor coupler is seated completely 3. Change the tubing <p>* Return to Arthrex® for repair</p>
Console fails Self Diagnostic Test*	<ol style="list-style-type: none"> 1. Ensure that no tubing is connected to the pump during power on sequence <p>* Return to Arthrex for repair</p>
Console will not power up	<ol style="list-style-type: none"> 1. Check the AC main power cord 2. Try an alternate power outlet 3. Check the AC main fuses <p>* Return to Arthrex for repair</p>
Lack of distention liquid bloody/cloudy	<ol style="list-style-type: none"> 1. Activate LAVAGE mode 2. Increase pressure 3. Decrease outflow
Does not pump when activated	<ol style="list-style-type: none"> 1. Check for error messages 2. Open all tubing clamps and shut-off valves 3. Ensure actual pressure is below the target pressure 4. Check if the tubing is pinched, kinked, or blocked <p>* Return to Arthrex for repair</p>
Door Open*	<ol style="list-style-type: none"> 1. Roller housing not secured – ensure locking lever is properly secured <p>* Return to Arthrex for repair</p>
Inadequate pressure	<ol style="list-style-type: none"> 1. Increase pressure 2. Activate LAVAGE mode 3. Reduce outflow 4. Use high-flow cannulas

PROBLEM	SOLUTION
No/Low Flow	<ol style="list-style-type: none"> 1. Check for error messages 2. Check that all tubing clamps are open 3. Check the settings for flow and pressure 4. Check if the tubing is pinched, kinked or blocked 5. Check that tubing seats correctly over the rollers 6. Verify use of high-flow cannulas 7. If failure remains, return to Arthrex for repair
Overpressure	<ol style="list-style-type: none"> 1. If failure remains, increase or open outflow 2. Manipulate joint to stress-free position
Pressure Fault	<ol style="list-style-type: none"> 1. Ensure adequate fluid supply 2. Decrease outflow 3. Check tubing for damage and if it is pinched, kinked or blocked 4. Check tubing for proper connections 5. Replace tubing 6. If failure remains, return to Arthrex for repair
No Shaver Detection	<p>Synergy Shaver Detection</p> <ol style="list-style-type: none"> 1. Verify Synergy Resection Console is at least 2.3 2. Ensure the Synergy cable is connected 3. Press stop and then run on CW4 while the Synergy Resection Console is on 4. Replace the shaver detection cable 5. If failure remains, return to Arthrex for repair

For a full listing of warnings and instructions, please consult the *Directions for Use and User Manual*, packaged with the pump or pump tubing. These materials can also be found on Arthrex.com.

This description of technique is provided as an educational tool and clinical aid to assist properly licensed medical professionals in the usage of specific Arthrex products. As part of this professional usage, the medical professional must use their professional judgment in making any final determinations in product usage and technique. In doing so, the medical professional should rely on their own training and experience and should conduct a thorough review of pertinent medical literature and the product's Directions For Use.



<http://www.arthrex.com/imaging-resection/fluid-management>

View U.S. patent information at www.arthrex.com/corporate/virtual-patent-marking

©2019, Arthrex Inc. All rights reserved. DFU-0257-1, rev. 0 08/2019