

# FiberTape<sup>®</sup> Cerclage Single-Use Tensioner

Surgical Technique

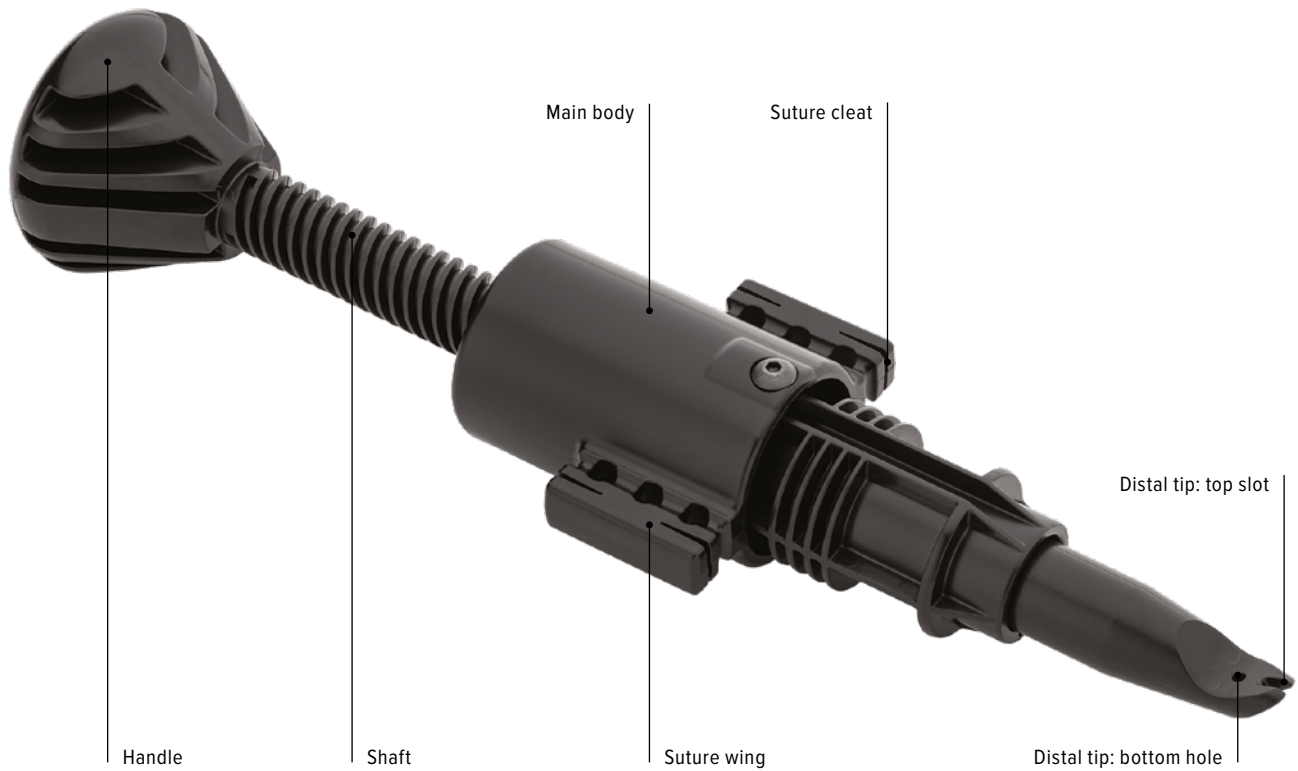


**Arthrex<sup>®</sup>** 

## FiberTape® Cerclage Single-Use Tensioner

---

The FiberTape cerclage single-use tensioner provides a simple and efficient way to deliver reproducible and controlled compression of the cerclage construct during fracture management and sternal closure procedures.



### Single use

Tensioner is packaged sterile

### Intuitive design and quick technique

Simply wrap the sutures around the suture wings, cleat the sutures, and turn the handle to deliver optimal tension

### Built-in tension gauge lines

Laser marks on the shaft provide a reference to help deliver controlled and reproducible tension for each cerclage around the fracture



1  
Insert one suture limb through the bottom hole and the other suture limb into the top slot at the distal end of the tensioner. Then slide the tensioner all the way down onto the knot, ensuring its flat end is covering the knot.

**Note:** Before loading the suture limbs, ensure the tensioner’s shaft is in the starting position by turning the handle counterclockwise until it stops.



2  
Wrap each suture limb at least once around the body of the suture wings and then secure the tape portion of the suture in the cleats. Make sure the suture limbs are inside the cleats to prevent the suture from slipping during tensioning.

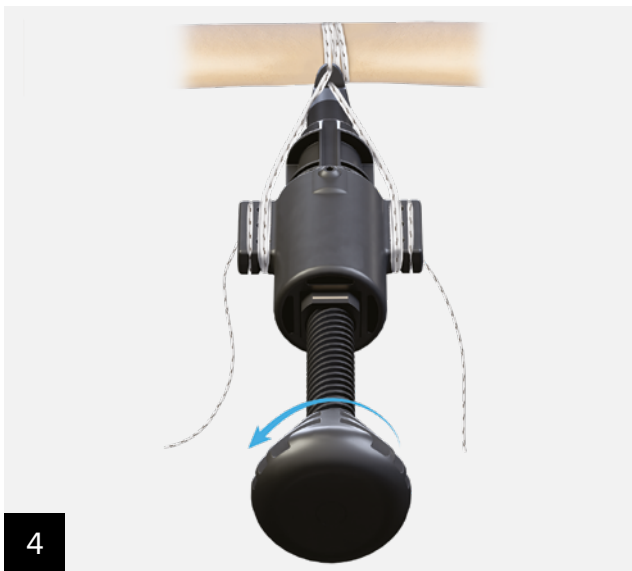


3  
Turn the handle clockwise to tension the suture until the desired amount of compression is achieved.



**Gauge lines are provided as a reference and aid in applying consistent tension when multiple FiberTape cerclages are used. Take caution to avoid over-tensioning and going beyond the fourth gauge line, where the tensioner’s spring is nearing its maximum compression.**

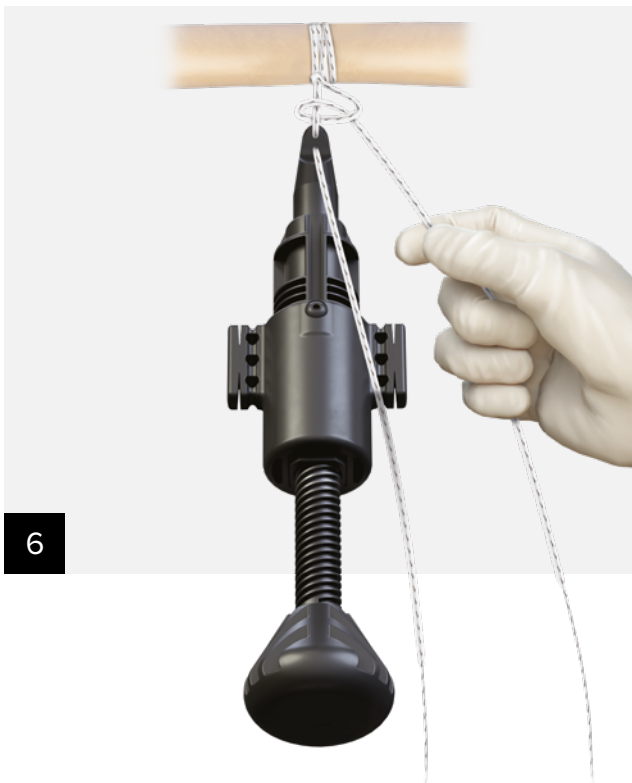
**Note:** the disposable tensioner has a 100-lb spring.



Once the desired amount of tension is reached, turn the handle completely counterclockwise to loosen the suture limbs.



Remove the suture limbs from the cleats and unwrap them from the body of the suture wings.



Tie a half-hitch to secure the knot. If necessary, retension to remove any residual slack in the sutures, then tie two alternating half-hitches to lock down the cerclage.

**Note:** Before retensioning, turn the handle completely counterclockwise to ensure the tensioner shaft is fully extended and in the starting position.

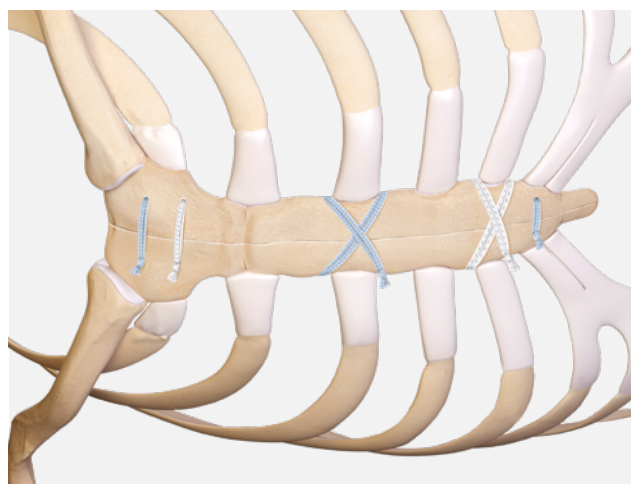
## FiberTape® Cerclage Implant System

FiberTape cerclage – a high-strength polyester tape reinforced with UHMWPE – is a nonmetallic alternative to metal wires and cables traditionally used for circumferential fracture fixation.

- Delivers uncompromising strength<sup>1-3</sup>
- Features broad footprint compression and a low-profile construct that allows for plates to lie flat over the tapes and flush with bone
- 100 % radiolucent, eliminating unwanted imaging artifacts
- No sharp metal ends or broken wires to potentially cause injury or soft-tissue irritation
- Easy-to-use suture loader and tensioning device help deliver reproducible and secure fixation



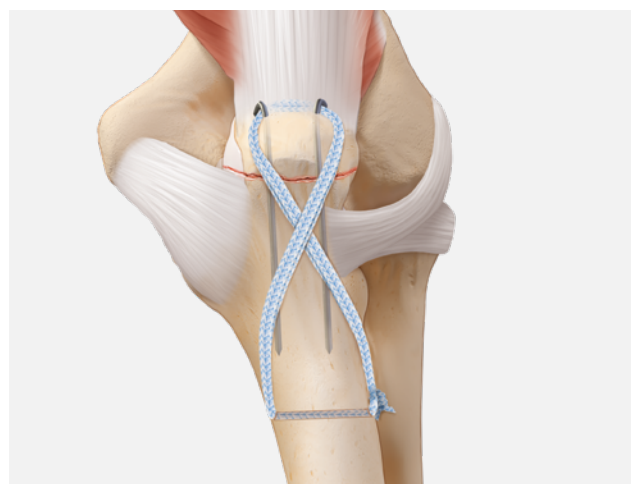
FiberTape cerclage supports open reduction and internal fixation of periprosthetic femur fractures



FiberTape sternal closure for median sternotomy



FiberTape cerclage placed prophylactically helps prevent intraoperative proximal femur fractures during hip arthroplasty



FiberTape cerclage may be used as a tension band to assist in the fixation of transverse olecranon fractures

### References

1. Arthrex, Inc. Data on file (APT 3197). Naples, FL; 2017.
2. Arthrex, Inc. Data on File (APT 04426). Naples, FL; 2019.
3. Arthrex, Inc. Data on file (APT 4577). Naples FL; 2020.

## Ordering Information

Product Description	Item Number
FiberTape® cerclage tensioner, disposable	AR-7820
FiberTape® Cerclage and FiberTape® Sternal Closure Implants	
FiberTape® cerclage	AR-7268
TigerTape™ cerclage	AR-7268T
FiberTape® sternal closure, with cutting needle	AR-7288
TigerTape™ sternal closure, with cutting needle	AR-7288T
FiberTape® sternal closure, with blunt needle	AR-7289
TigerTape™ sternal closure, with blunt needle	AR-7289T

Products advertised in this brochure / surgical technique guide may not be available in all countries. For information on availability, please contact Arthrex Customer Service or your local Arthrex representative.



FiberTape cerclage  
AR-7268



FiberTape cerclage  
disposable tensioner  
AR-7820





This description of technique is provided as an educational tool and clinical aid to assist properly licensed medical professionals in the usage of specific Arthrex products. As part of this professional usage, the medical professional must use their professional judgment in making any final determinations in product usage and technique. In doing so, the medical professional should rely on their own training and experience, and should conduct a thorough review of pertinent medical literature and the product's directions for use. Postoperative management is patient-specific and dependent on the treating professional's assessment. Individual results will vary and not all patients will experience the same postoperative activity level and/or outcomes.

View U.S. patent information at [www.arthrex.com/corporate/virtual-patent-marking](http://www.arthrex.com/corporate/virtual-patent-marking)

**arthrex.com**

© Arthrex GmbH, 2022. All rights reserved. LT2-000233-en-US\_A