

NANO ARTHROSCOPY AND ENDOSCOPY

The Nano Arthroscopy Imaging System consists of the NanoScope™ console and the NanoNeedle Scope.

It is a medical-grade, all-in-one, 1.9 mm arthroscopy system that features a disposable camera with chip-on-tip image sensor technology. Its portability allows the surgeon to perform minimally invasive arthroscopy during preoperative, intraoperative, and postoperative phases of care using the NanoNeedle Scope as the main arthroscope or as an adjunct to a conventional arthroscope.

Nano arthroscopy, however, is not only about imaging. Indeed, the goal is to revolutionize orthopedics again, initiate a paradigm shift, and establish new surgical techniques. Therefore, Nano products will increase across multiple product portfolios.

Note: Additional resources and ordering information/item numbers are listed at the end of this document.



NANO ARTHROSCOPY IMAGING SYSTEM: FEATURES

NanoNeedle Scope



NanoNeedle Scope Features

- Disposable
- Headless design
- Three lengths available for a wide range of applications:
 - **125 mm:** Standard length
 - **180 mm:** Hip; Nano Centerline™ system
 - **250 mm:** Spine; general surgery
- 1.9 mm scope diameter
- 0° direction of view
- 120° field of view
- Integrated LED light source
- Integrated camera sensor chip (chip-on-tip technology)
- Lightweight and well balanced

NanoScope™ Console



NanoScope Console Features

- Portable control unit, including documentation and data management
- Synergy Surgeon iPad App support.
- Allows for image and video acquisition
- 13 in touchscreen monitor
- Rechargeable-battery powered (more than 100 minutes)
- Medical-grade device
- Ethernet, USB, and HDMI ports
- Wireless network capabilities (Software 1.2 or newer)
- Integrated microphone
- 128 GB internal storage
- DICOM (Software 1.2 or newer)

NanoScope Console

Product Description	Item Number
NanoScope Console	AR-3200-0030

NanoNeedle Scope

Product Description	Item Number
NanoNeedle Scope, 125 mm	AR-3210-0043
NanoNeedle Scope, 180 mm	AR-3210-0044
NanoNeedle Scope, 250 mm	AR-3210-0045

NANO ARTHROSCOPY IMAGING SYSTEM: KEY TECHNOLOGICAL BENEFITS

NanoNeedle Scope:

- All-in-1 system with a built-in light source and chip-on-tip technology
- Ergonomic design
- True needle-like feel for precise control across all joint spaces
- Ridged feature on hand grip allows for scope orientation and surgeon comfort
- Three different lengths for increased versatility
- Massive reduction in the invasive area compared to conventional arthroscopy (see next page)
- Single-use to help avoid cross contamination and decrease infection rates
- Chip-on-tip technology for increased durability as there are no breakable rod lenses
- Decreased cost for scope repair
- Decreased cost for sterilization and reprocessing
- Semirigid design for flexible maneuvering
- First fully specialized system for direct single-portal anchor placement (see below)
- Inflow cannula/sheath for direct-guided injections into joint space
- Various fluid-management options available, including syringe, gravity tubing, extension tubing for easy syringe control, Continuous Wave™ 4 and DualWave™ pumps

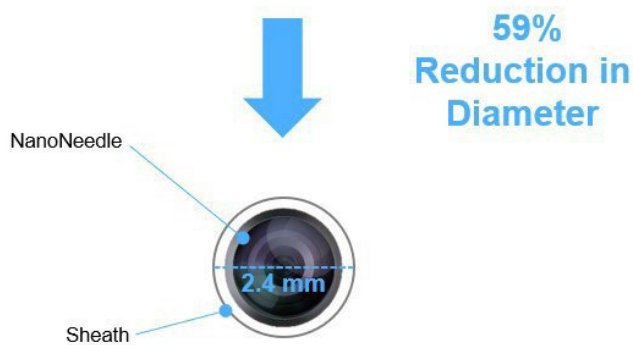
NanoScope™ Console:

- Slim and portable system for instant access to visualization equipment
- Medical-grade camera-control unit with durable handpiece connector
- Wireless connectivity to facility network (Software 1.2 or newer)
- Built-in microphone for video voice-over
- HDMI output to extend video signal to in-room displays and integration systems
- Data export to USB, a shared network folder, or via DICOM (Software 1.2 or newer)
- Synergy Surgeon™ app to manage photos and videos and create customized reports
- Printing option (Software 1.3 or newer)

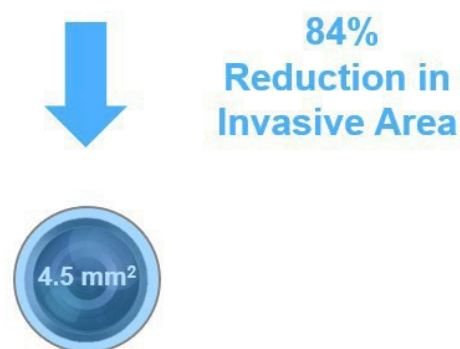
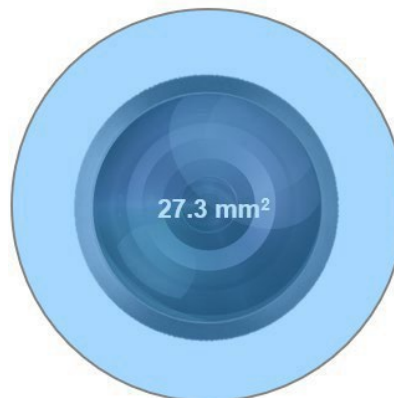


Size Comparison: NanoNeedle Scope vs Conventional 4 mm Arthroscope

Diameter Comparison (Considering Diagnostic Inflow Cannula/Sheath)



Invasive Area Comparison (Considering Diagnostic Inflow Cannula/Sheath)



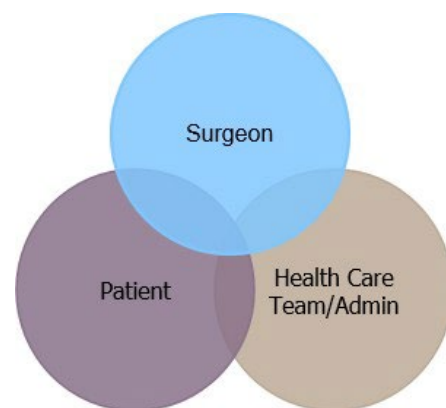
The **diameter** of the NanoNeedle Scope is 59% smaller than that of a conventional 4 mm arthroscope when considering the inflow cannula/sheath (or 44% smaller if you consider the high-flow cannula/sheath).

The **invasive area** of the NanoNeedle Scope is 84% smaller than that of a conventional 4 mm arthroscope when considering the inflow cannula/sheath (or 69% smaller if you consider the high-flow cannula/sheath).



NANO ARTHROSCOPY IMAGING SYSTEM: KEY BENEFITS FOR STAKEHOLDERS

While the patient is an obvious stakeholder, the surgeon, health care team, and administration are also stakeholders. While the Nano arthroscopy imaging system offers benefits to all stakeholders individually, there are shared benefits as well.



BENEFITS FOR THE PATIENT:

- Hygienic, single-use system helps avoid cross contamination and decreases infection rates
- Procedures potentially under local anesthetic and light sedation instead of general anesthetic¹
- Less postoperative pain and anxiety associated with wide-awake local anesthesia¹
- Promotes “incisionless surgery” with less trauma and a shorter hospitalization time²
- No additional wait time for MRI; potential for same-day diagnosis and surgical treatment

BENEFITS FOR THE SURGEON:

- Durable, lightweight, and well balanced
- Pencil-style grip for precise control across all joint spaces
- Three different lengths for increased versatility
- Fast diagnosis
- Clinical outcome measures with second looks
- Patient-surgeon interaction when performed under local anesthesia may help improve outcomes and patient satisfaction scores
- Increased visualization in tight joint spaces
- Option to market Nano arthroscopy
- Outside OR procedures (depending on country regulations)

BENEFITS FOR THE HEALTH CARE TEAM/ADMIN:

- Quick and easy setup
- Portable system to equip various facility spaces
- Less OR time
- Decreased footprint with less equipment to maximize facility space
- Reduced capital cost
- Fewer reprocessing, maintenance, and repair costs
- No procedure delays due to equipment cleaning

References

1. Colasanti CA, Mercer NP, Garcia JV, Kerkhoffs GMMJ, Kennedy JG. In-office needle arthroscopy for the treatment of anterior ankle impingement yields high patient satisfaction with high rates of return to work and sport. *Arthroscopy*. 2022;38(4):1302-1311. doi:10.1016/j.arthro.2021.09.016
2. Lavender C, Lycans D, Sina Adil SA, Kopiec A, Schmicker T. Incisionless partial medial meniscectomy. *Arthrosc Tech*. 2020;9(3):e375-e378. doi:10.1016/j.eats.2019.11.003

NanoNeedle Scope: Accessories

In addition to the Nano arthroscopy imaging system, accessories are available to perform arthroscopic or endoscopic procedures.

Sheath Kits

To ensure surgeons have the appropriate sheath for each application, various NanoNeedle Sheath Kits can be ordered separately.

Components

Each sheath kit contains the following single-use components:

- One straight inflow sheath with a sharp obturator
- One 10° angled inflow sheath with blunt flexible cannulated obturator
- One stopcock



KEY FACTS

- There are the following 3 different sheath kits available both for the 125 mm and 180 mm NanoNeedle Scope:
 - Diagnostic Sheath Kit for diagnostic procedures; 2.4 mm outer diameter
 - High-Flow Sheath Kit with increased flow rate for operative procedures; 3.3 mm outer diameter
 - High-Flow Sheath Kit with the crown tip and fenestration cutout for direct single-portal anchor placement (see below); outer diameter 3.3 mm
- There is no sheath kit available for the 250 mm NanoNeedle Scope as the main applications are spine and outside of orthopedics.
- The blunt, flexible cannulated obturator can be used in either the straight or angled sheath, and the Percutaneous Insertion Kit guides the sheath in place over the 1.1 mm guidewire.
- All sheath options feature a thread at the proximal end for the Nano FiberTak ® handle (see Nano FiberTak Handles section).

Sheath Kits for NanoNeedle Scope, 125 mm

Product Description	Item Number
NanoNeedle Scope Diagnostic Sheath Kit, 125 mm (2.4 mm outer diameter)	AR-3210-0050
NanoNeedle Scope High-flow Operative Sheath Kit, 125 mm (3.3 mm outer diameter)	AR-3210-0051
NanoNeedle Scope High-flow Operative Sheath Kit, 125 mm, w/ crown tip and fenestration cutout (3.3 mm outer diameter)	AR-3210-0052

Sheath Kits for NanoNeedle Scope, 180 mm

Product Description	Item Number
NanoNeedle Scope Diagnostic Sheath Kit, 180 mm (2.4 mm outer diameter)	AR-3210-0054
NanoNeedle Scope High-flow Operative Sheath Kit, 180 mm (outer diameter 3.3 mm)	AR-3210-0055
NanoNeedle scope High-flow Operative Sheath Kit, 180 mm, w/ crown tip and fenestration cutout (outer diameter 3.3 mm)	AR-3210-0058

NOTES

DO NOT use the rigid obturator in the pre-bent sheath to avoid damage to the external sheath wall. The flexible obturator can be used with both straight and pre-bent sheaths.

Access Kits

The NanoNeedle Scope Access Kits contain both inflow sheaths and components essential for precise elbow or hip joint access.

Components

Each sheath kit contains the following single-use components:

- One straight inflow sheath with a sharp obturator
- One 10° angled inflow sheath with blunt flexible cannulated obturator
- One stopcock
- One spinal needle stylet
- One guidewire



Access Kits for NanoNeedle Scope, 125 mm

Product Description	Item Number
NanoNeedle Scope High-flow Operative Sheath Kit (elbow access), 125 mm	AR-3210-0053

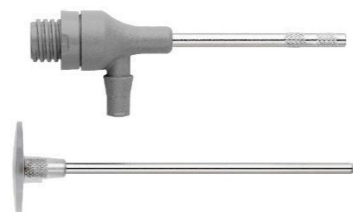
Access Kits for NanoNeedle Scope, 180 mm

Product Description	Item Number
NanoNeedle Scope Diagnostic Sheath Kit (hip access), 180 mm	AR-3210-0056
NanoNeedle Scope High-flow Operative Sheath Kit (hip access), 180 mm	AR-3210-0057

Working Cannulas

Components

- One single-use working cannula with blunt obturator, 3.4 mm inner diameter / 3.8 mm outer diameter



Key Facts

- Two different lengths, 1.5 cm and 5 cm
- Facilitates insertion of the NanoNeedle Scope, Nano hand instruments, and small-diameter shaver blades
- Flexible plastic dam to help prevent fluid loss
- Knurl pattern at the distal end to ensure the cannula stays in position during instrument removal
- Thread at the proximal end for the Nano FiberTak® handle (see Nano FiberTak Handles section)

Working Cannulas

Product Description	Item Number
NanoNeedle Scope Working Cannula, 5 cm	AR-3210-0059
NanoNeedle Scope Working Cannula, 1.5 cm	AR-3210-0063

Nano FiberTak® Handles

Screw a reusable Nano FiberTak handle on a NanoNeedle sheath or a NanoNeedle working cannula to create the NanoNeedle spear the first fully specialized scope sheath for direct single-portal anchor placement in arthroscopic procedures.



Nano FiberTak Handles

Product Description	Item Number
Nano 1.8 mm FiberTak Handle, for DEX, reusable	AR-3210-0061
Nano 1.8 mm FiberTak Handle, for shoulder, reusable	AR-3210-0060
Nano 1.8 mm FiberTak Handle, for hip, reusable	AR-3210-0062

KEY FACTS

- Three different lengths to accommodate DEX, shoulder, and hip procedures
- Can be used with all NanoNeedle sheaths and working cannulas
- Reusable
- For use with the crown-tip sheaths (AR-3210-0052 and 3210-0058)
- For 1.8 mm FiberTak anchor placement

How to Set Up the NanoNeedle Spear

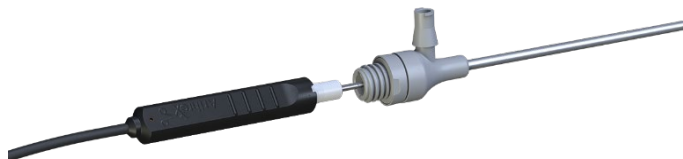
Step 1:

Find the right spot for anchor placement in the NanoNeedle Scope.



Step 2:

After direct anchor placement is visualized, remove the NanoNeedle Scope.



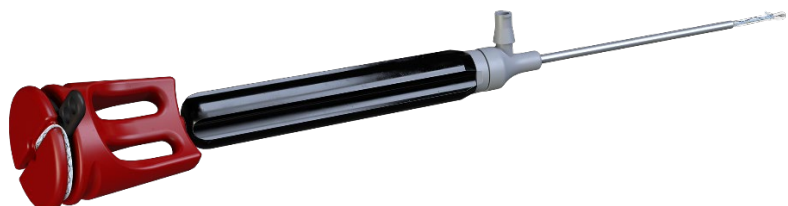
Step 3:

Screw on the Nano FiberTak handle.



Step 4:

Perform your anchor placement using preferred technique



NanoResection™ Accessories

Atraumatically reaches pathologies without sacrificing resection efficiency with NanoResection accessories. For portals smaller than 3.5 mm, use either the Nano Sabre shaver or Nano oval burr, each with a diameter of only 2.8 mm in, allowing surgeons to treat pathologies without suture closure. Additionally, the smaller diameter preserves native tissue while the length allows all necessary pathologies to be addressed.



KEY FEATURES AND BENEFITS

- 2.8 mm diameter is 30% smaller compared to a standard 4.0 mm blade
- 110 mm length reaches posterior pathologies of the knee and more easily fits in tight knees, which may aid in reducing iatrogenic damage
- Operates on lightweight NanoResection small-hub handpiece, providing improved dexterity and balance with the NanoNeedle Scope

NOTES

- NanoResection devices will **not** pass through the Nano arthroscopy cannula; use a working cannula (AR-3210-0059 or AR-3210-0063) or insert percutaneously
- If you want to use the devices in conjunction with an arthroscopy pump, use the High-Flow Sheath Kit instead of the Diagnostic Sheath Kit; due to shaver suction, an improved inflow is required to avoid joint collapse

NanoResection Shaver Blades and Burrs (2.8 mm diameter, 110 mm length, sterile pack, single-use, VE1)

Product Description	Item Number
Nano Sabre Shaver	AR-9280NSR-1
Nano Oval Burr, 10 flutes	AR-9280NOT-1

Additional Required Products

Product Description	Item Number
Synergy ^{Resection™} Console	AR-8305
NanoResection Small-Hub Handpiece	AR-8330SJ
Synergy ^{Resection} Wireless Footswitch	AR-8315W

Nano Arthroscopy Hand Instruments

Harnessing 20 years of excellence in designing arthroscopic hand instruments, Arthrex has engineered the next generation of instruments for diagnostic, resection, and extraction procedures.



The NanoProbe is an articulating, retractable hook probe used for diagnostic procedures. The NanoBiter, NanoScissor, and NanoGrasper are small arthroscopic soft-tissue resection instruments. Just 2 mm in diameter, they are designed for atraumatic insertion through tight joint spaces. These instruments are sharp and engineered to efficiently resect meniscal tissue and other soft-tissue structures.

KEY FEATURES AND BENEFITS

- Can be used with any conventional arthroscope or with the NanoNeedle portfolio
- 2 mm diameter is a 41% diameter reduction and a 66% reduction of invasive area compared to conventional 3.4 mm hand instruments
- Available in standard (130 mm) and small joint (70 mm) working lengths
- Single-use design for an unmatched sharpness, ensuring optimal resection on every procedure
- Presterilized for a clean instrument every time
- Low-profile design for greater access to hard-to-reach pathology without sacrificing resection efficiency

NOTES

- 15° up-biter will **not** pass through the Nano arthroscopy cannula; insert percutaneously
- NanoProbe features laser markings in 5 mm increments



Nano Arthroscopy Hand Instruments (2 mm outer diameter, 130 mm shaft length, sterile pack, single-use, VET1)

Product Description	Item Number
NanoBiter, straight	AR-10911D-1
NanoBiter, 15° up	AR-10922D-1
NanoGrasper, straight	AR-10913D-1
NanoScissor, straight	AR-10915D-1
NanoProbe, retractable	AR-10100N



Nano Arthroscopy Hand Instruments (2 mm outer diameter, 70 mm shaft length, sterile pack, single-use, VE1)

Product Description	Item Number	
NanoBiter, straight	AR-10901D-1	
NanoBiter, 15° up	AR-10902D-1	
NanoGrasper, straight	AR-10903D-1	
NanoScissor, straight	AR-10905D-1	

NanoScopic™ Bone Prep

The Nano PM team is pleased to announce the launch of the Nano Bone Prep line, which includes instrumentation for our surgeons to complete microfracture as well as small work. As we continue to expand the Nano arthroscopy line, we look forward to helping surgeons increase their minimally invasive practice.



KEY FEATURES AND BENEFITS

- **Bendability:** Contour instruments in the Nano Bone Prep line using the new Nano reusable bending tool.
- **Sharpness:** Single-use instruments are sharp and precise.
- **Size:** Ergonomically designed for extremities, instruments in this line are available in two lengths —7 cm and 10 cm—for expanded applications.

TECHNICAL PEARLS

- Low-profile tools pair with AutoCart™ surgical technique for chondrocyte transplantation
- Works with the Nano Saber shaver (AR-96280NSR) and GraftNet™ device with BioCartilage® extracellular matrix.

SALES TOOLS AND RESOURCES

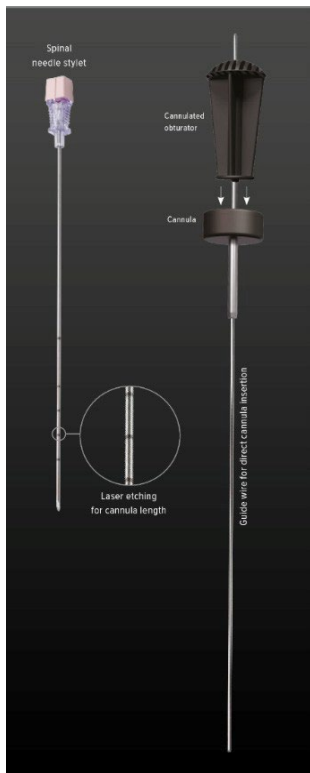
<https://www.arthrex.com/link/asset/BTKGtz1Xl0qjwAF-VT2bTg>

<https://www.arthrex.com/link/asset/FGyNjQQnO0C-gAF9fH8fhA>

Ordering Info	Part Number	List	Stocking
30° Chondral Pick, 7 cm	AR-1091CP-70-1	\$250	\$175
30° Chondral Pick, 10 cm	AR-1091CP-100-1	\$285	\$199
30° Chondral Pick, 7 cm (5-pack)	AR-1091CP-70	\$1215	\$850
30° Chondral Pick, 10 cm (5-pack)	AR-1091CP-100	\$1215	\$850
Cup Curette, 7 cm	AR-1091CC-70-1	\$250	\$175
Cup Curette, 10 cm	AR-1091CC-100-1	\$285	\$199
Cup Curette, 7 cm (5-pack)	AR-1091CC-70	\$1215	\$850
Cup Curette, 10 cm (5-pack)	AR-1091CC-100	\$1215	\$850
Ring Curette, 7 cm	AR-1091RC-70-1	\$250	\$175
Ring Curette, 10 cm	AR-1091RC-100-1	\$285	\$199
Elevator, 7 cm	AR-1091E-70-1	\$179	\$125
Elevator, 10 cm	AR-1091E-100-1	\$222	\$155

Percutaneous Insertion Kit

Percutaneous Insertion Kit is designed for cannula insertion and measuring the appropriate cannula length.



KEY FEATURES

- Includes cannulated 17 ga spinal needle-stylet with laser etchings to measure Nano arthroscopy cannula features multiple depths (1.5, 3, 4, 5, and 7 cm)
- Includes a 1.1 mm guidewire
- Guidewire can also be used as a switching stick for a second NanoNeedle sheath

Cannula Insertion Recommendation

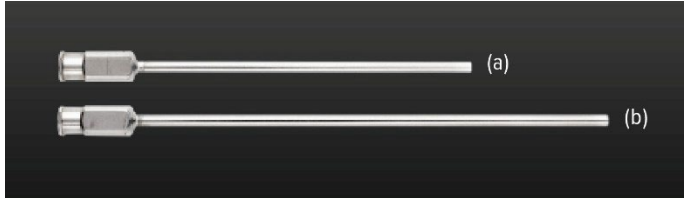
1. Insert calibrated needle-stylet
2. Measure appropriate cannula length
3. Remove stylet and insert the guidewire through the needle
4. Keeping guidewire in place, remove the needle
5. Insert cannula and obturator over guidewire into joint space
6. Keeping cannula in place, remove the guidewire and obturator
7. Add Tegaderm™ transparent film dressing adhesive for hands-free usage to prevent cannula fallout

Percutaneous Insertion Kit, VE1

Product Description	Item Number
Percutaneous Insertion Kit	AR-1090PK-1

Nano Arthroscopy Outflow Cannulas

The outflow cannula can be inserted through the Nano arthroscopy cannula for aspiration of fluid and resected soft tissue.



KEY FEATURES AND BENEFITS

- Can be inserted through the Nano arthroscopy cannula
- Connects to syringes and suction tubing
- Available in 2 different lengths, 7 cm, and 10 cm
- Single-use sterile packaged




Outflow Cannula (2.4 mm outer diameter, sterile pack, single-use, VE1)

Product Description	Item Number
Outflow Cannula, 7 cm	AR-1090S-70-1
Outflow Cannula, 10 cm	AR-1090S-100-1

Tegaderm is a trademark of 3M Medical.

Mobile Cart Options

The following carts are compatible with the NanoScope™ console.

Secondary Cart	Synergy MSK™ Cart	DualWave™ Cart
		
<p>Using the secondary cart, build out a smaller-form factory arthroscopy cart for easy maneuverability between the OR and NanoSuite spaces.</p>	<p>Mount the NanoScope console to the Synergy MSK cart (AR-3502-CRT) with the ATX-2601.</p> <p>Please note: The NanoScope console can be mounted to a standard VESA mount adapter.</p>	<p>Use adjustable mounting arm 5010-1500 to mount the NanoScope console to the DualWave cart (AR-6481).</p>

Secondary Cart

Product Description	Item Number
Secondary Cart	304830-00

Synergy MSK Cart

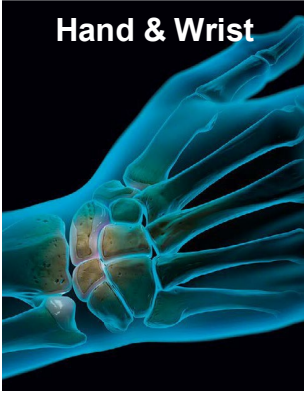

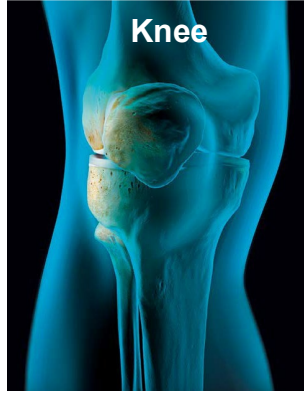
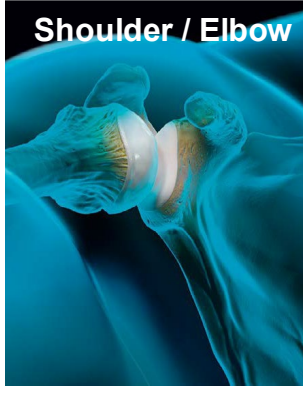
Product Description	Item Number
Synergy MSK Ultrasound Mobile Cart	AR-3502-CRT
NanoScope Console Mount	ATX-2601

Dual Wave Cart

Product Description	Item Number
DualWave Cart	AR-6481
NanoScope Console Mount for AR-6481	5010-1500

Applications

The Nano Arthroscopy System and assorted accessories are designed for performing minimally invasive arthroscopy in various joint spaces. Below is a breakdown of initial procedure targets.

Hand & Wrist	Foot & Ankle	Knee	Shoulder / Elbow
			
Diagnostic and second-look arthroscopy and direct guided injection	Diagnostic and second-look arthroscopy and direct guided injection	Diagnostic and second-look arthroscopy and direct guided injection	Diagnostic and second-look arthroscopy and direct guided injection
Radiocarpal joint	Syndesmosis	Meniscectomy and meniscal repair	Biceps tenotomy
Mediocarpal joint	Peroneal/posterior tibial tendon	Lateral release	Biceps tenodesis
STT joint	Talonavicular joint and calcaneocuboid	ACL and meniscal root repair	Free body removal
DRU joint	1st TMT/1st MTP joint	Preplanning for cartilage lesions and joint arthroplasty	
TFCC	Fracturoscopy	Fracturoscopy	
CMC1			
Finger joints			

SALES TOOLS AND RESOURCES

NanoNeedle Scope Arthroscopy of the Wrist Using Dorsal Portals	VID1-003331
Introduction to the NanoNeedle Scope and Knee Arthroscopy Local Protocol	VID1-003236
Introduction to the NanoNeedle Scope	VID1-003159
Diagnostic Ankle Arthroscopy Using the NanoNeedle Scope	VID1-003256
Various videos are accessible via Arthrex.com	Link

ORDERING INFORMATION

Nano Arthroscopy Imaging System

Product Description	Item Number
NanoScope™ Console	AR-3200-0030
NanoNeedle Scope, 125 mm	AR-3210-0043
NanoNeedle Scope, 180 mm	AR-3210-0044
NanoNeedle Scope, 250 mm	AR-3210-0045

NanoNeedle Scope Sheath Kits

Product Description	Item Number
NanoNeedle Scope Diagnostic Sheath Kit, 125 mm, 2.4 mm outer diameter	AR-3210-0050
NanoNeedle Scope High-Flow Operative Sheath Kit, 125 mm, 3.3 mm outer diameter	AR-3210-0051
NanoNeedle Scope High-Flow Operative Sheath Kit, 125 mm, w/ crown tip and fenestration cutout, 3.3 mm outer diameter	AR-3210-0052
NanoNeedle Scope Diagnostic Sheath Kit, 180 mm, 2.4 mm outer diameter	AR-3210-0054
NanoNeedle Scope High-Flow Operative Sheath Kit, 180 mm, 3.3 mm outer diameter	AR-3210-0055
NanoNeedle Scope High-Flow Operative Sheath Kit, 180 mm, w/crown tip and fenestration cutout, 3.3 mm outer diameter	AR-3210-0058

NanoNeedle Scope Access Kits

Product Description	Item Number
NanoNeedle Scope High-Flow Operative Sheath Kit (elbow access), 125 mm	AR-3210-0053
NanoNeedle Scope Diagnostic Sheath Kit (hip access), 180 mm	AR-3210-0056
NanoNeedle Scope High-Flow Operative Sheath Kit (hip access), 180 mm	AR-3210-0057

NanoNeedle Scope Working Cannulas

Product Description	Item Number
NanoNeedle Scope Working Cannula, 5 cm	AR-3210-0059
NanoNeedle Scope Working Cannula, 1.5 cm	AR-3210-0063

Nano FiberTak® Handles

Product Description	Item Number
Nano 1.8 mm FiberTak Handle, for DEX, reusable	AR-3210-0061
Nano 1.8 mm FiberTak Handle, for shoulder, reusable	AR-3210-0060
Nano 1.8 mm FiberTak Handle, for hip, reusable	AR-3210-0062

NanoResection™ Shaver Blades and Burrs (2.8 mm diameter, 110 mm length, sterile pack, single-use, VE1)

Product Description	Item Number
Nano Sabre Shaver	AR-9280NSR-1
Nano Oval Burr, 10 flutes	AR-9280NOT-1

Additional Required Products for NanoResection Devices

Product Description	Item Number
Synergy ^{Resection™} Console	AR-8305
NanoResection Small-Hub Handpiece	AR-8330SJ
Synergy ^{Resection} Wireless Footswitch	AR-8315W

Nano Arthroscopy Hand Instruments (2 mm outer diameter, 130 mm shaft length, sterile pack, single-use, VE1)

Product Description	Item Number
NanoBiter, straight	AR-10911D-1
NanoBiter, 15° up	AR-10922D-1
NanoGrasper, straight	AR-10913D-1
NanoScissor, straight	AR-10915D-1
NanoProbe, retractable	AR-10100N

Nano Arthroscopy Hand Instruments (2 mm outer diameter, 70 mm shaft length, sterile pack, single-use, VE1)

Product Description	Item Number
NanoBiter, straight	AR-10901D-1
NanoBiter, 15° up	AR-10902D-1
NanoGrasper, straight	AR-10903D-1
NanoScissor, straight	AR-10905D-1

Nano Cannula and Cannulated Obturator (2.7 mm inner diameter, sterile pack, single-use, Tegaderm, VE1)

Product Description	Item Number
NanoCannula, 1.5 cm	AR-1090C-15-1
NanoCannula, 3 cm	AR-1090C-30-1
NanoCannula, 4 cm	AR-1090C-40-1
NanoCannula, 5 cm	AR-1090C-50-1
NanoCannula, 7 cm	AR-1090C-70-1

Outflow Cannula (2.4 mm outer diameter, sterile pack, single-use, VE1)

Product Description	Item Number
Outflow Cannula, 7 cm	AR-1090S-70-1
Outflow Cannula, 10 cm	AR-1090S-100-1

Percutaneous Insertion Kit, VE1

Product Description	Item Number
Percutaneous Insertion Kit	AR-1090PK-1

Gravity Tubing, Sterile Pack, Single-Use

Product Description	Item Number
Gravity Tubing, 2 spikes, 20 per box	AR-6412
Gravity Tubing, 4 spikes, 10 per box	AR-6414

Synergy MSK™ Cart

Product Description	Item Number
Synergy MSK Ultrasound Mobile Cart	AR-3502-CRT
NanoScope™ Console Mount	ATX-2601

Secondary Cart

Product Description	Item Number
Secondary Cart	304830-00

Dual Wave™ Cart

Product Description	Item Number
DualWave Cart	AR-6481
NanoScope Console Mount for AR-6481	5010-1500