

*Synergy<sup>UHD</sup> 4™  
4K Monitor*



*Synergy<sup>UHD</sup> 4™  
Console*

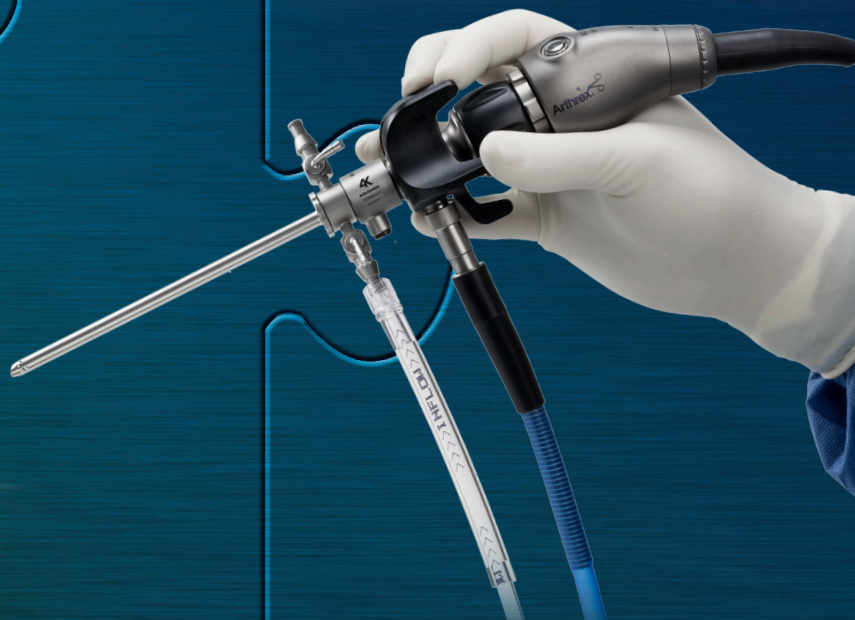
*Synergy<sup>RF</sup>™  
Console*

*Synergy  
Resection  
Console*

*DualWave™  
Arthroscopy  
Pump*

*Synergy  
Insufflator*

*What completes the perfect  
arthroscopy and endoscopy  
picture?*





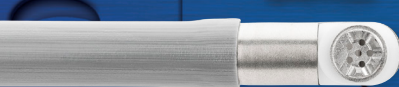
# Synergy<sup>RF</sup>™ System With Apollo<sup>RF</sup>® Probes and Synergy<sup>UHD4</sup>™ System

## *The First Bipolar RF System to Integrate With an Arthroscopic Imaging System*

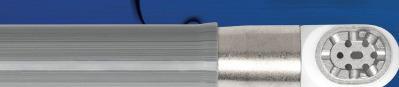
The Synergy<sup>RF</sup> system with Apollo<sup>RF</sup>® probes completes the Arthrex Synergy arthroscopy platform with an easy-to-read “heads-up display” of operational settings on the Synergy 4K monitor.

The Apollo<sup>RF</sup> system has a complete line of probes that are easy to use, and shaped to reach challenging anatomy with just the right amount of ablation performance to satisfy all your shoulder and knee arthroscopic needs.

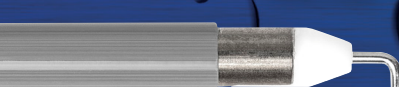
Apollo<sup>RF</sup>  
MP90 Probe



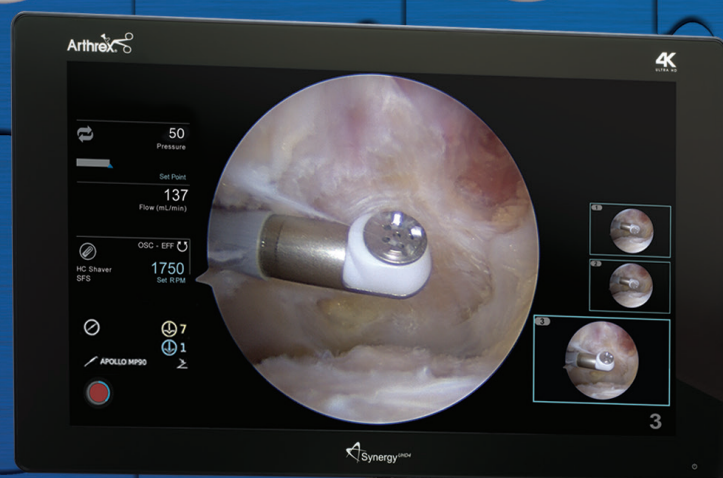
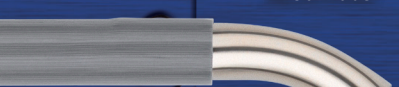
Apollo<sup>RF</sup>  
XL90 Probe



Apollo<sup>RF</sup>  
Hook Probe



Apollo<sup>RF</sup>  
MP50 Probe

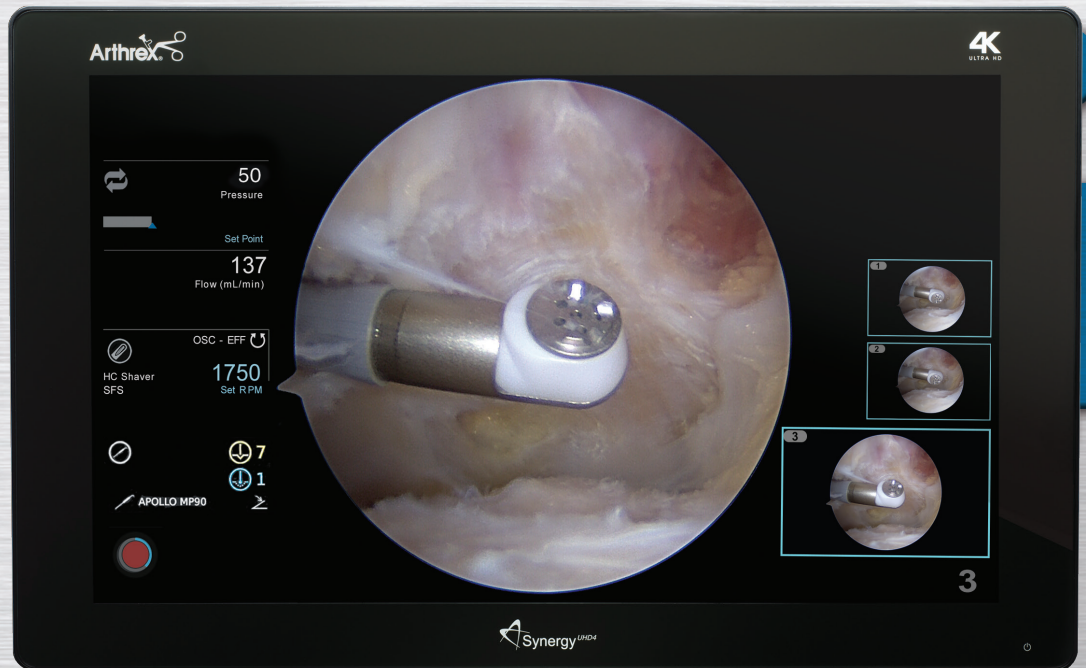






Imaging, LED, and data management are powered from a single source that can be updated routinely to keep you on the cutting edge of evolving technology and your hardware replacement costs low.

Arthrex's autoclavable Synergy<sup>UHD4™</sup> 4K imaging system provides real-time data directly on the monitor, including pump pressure, shaver speed, and RF power levels to keep you in control and your patient safe.



Free up your operative hand with StarFish<sup>™</sup> fingertip scope rotation.





# Synergy Resection and Drill System

## *Not just a Shaver System . . .*

Proprietary attachments such as the PowerPick™, PowerRasp™, Torpedo™, and ShaverDrill™ instruments, along with more than 100 blade and burr options, convert the Synergy resection system into a multi-use workhorse for most arthroscopic procedures.

ShaverDrill instruments specific to Arthrex's most popular suture anchors eliminate the need for heavy power equipment in arthroscopic soft-tissue repair procedures.

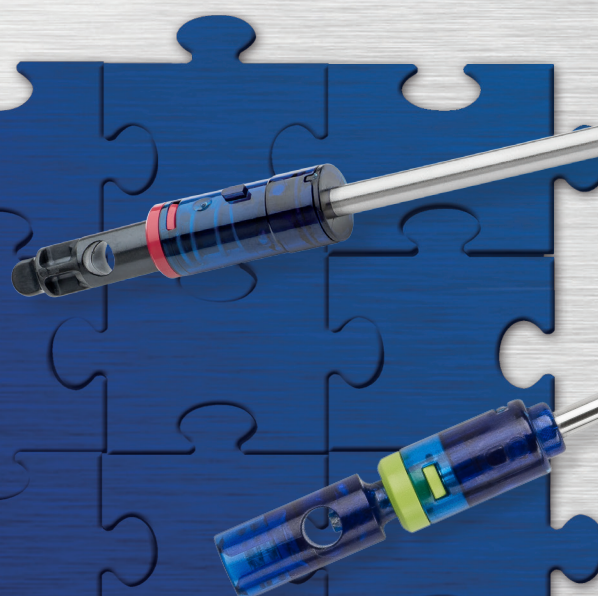
Hand or Foot Control Handpiece  
(small joint handpiece option available)

SutureTak®  
Shaver Drill

PowerPick  
Microfracture Instruments

PowerRasp Instruments

Torpedo Shaver Blade





# DrillSaw<sup>TM</sup> Power System

*Revolutionizing Power*



*DrillSaw  
Sports 400<sup>TM</sup>  
Power System*

Arthrex is proud to announce the latest powered instrument innovation to the market. The DrillSaw Sports 400<sup>TM</sup> system is a mid-sized battery-powered system that is lightweight, quiet, ergonomic, and powerful. Special features like an all-in-one pin/wire driver and a special battery health meter set this system apart from others available in the market.

Our DrillSaw Mini 300<sup>TM</sup> power system is cord-free and perfect for any small bone application. A full complement of saw blades is available.



*DrillSaw  
Mini 300  
Power System*



*DrillSaw  
Max 600  
Power System*

The workhorse of the DrillSaw Power system line is the Arthrex DrillSaw Max 600<sup>TM</sup> power system. This system is best for large bone orthopedic procedures such as total joint arthroplasty and long bone trauma. A full line of saw blades is available for any of the various implant systems available on the market.

Our new universal battery charger features a cell-balancing, cycle counter and advanced battery diagnostics. This single unit can charge any of the batteries for the Arthrex DrillSaw Power system family of products.



*Universal  
Battery Charger*



# Arthrex® Fluid Management Systems

*An Integrated Inflow and Outflow Fluid Management System That May Also Be Used as a Simple Inflow-Only Arthroscopy Pump*

The **DualWave™** arthroscopy pump's touch-panel video display gives real-time pressure, flow readings, and user-programmable defaults (which encompasses pressure presets, outflow rate, and shaver suction levels), giving the surgeon a consistent, repeatable operating experience.



DualWave Arthroscopy Pump

**Continuous Wave™ 4** provides continuous pulse-free flow that reacts immediately to changes in the intra-articular pressure so that joint distention can be sustained even under high shaver extraction volumes or secondary outflow.



Continuous Wave 4 Arthroscopy Pump



# Arthrex Surgical Mats

*Keep Your OR Dry, Slip-Free, and Safe.*

**The EcoSuctioner™** mat is the latest offering in ergonomic fluid-containment surgical mats from Arthrex. As the largest ergonomic comfort mat on the market, it is big enough for two people to stand on comfortably.



**The Suctioner™** disposable surgical mat combines the absorbency of the poly backed Dri-Safe™ pad and the nonslip, antifatigue memory foam construction of The Surgical Mat™ with powerful, quiet, continuous suction capability.

**Dri-Safe™** absorbent pads are economical and disposable floor pads that eliminate expensive laundry costs.



**The Fluid Diamond** is a disposable floor aspirator designed to quickly and quietly remove arthroscopic fluids from the operating room to create a safe working environment.



# Synergy MSK™ Ultrasound Imaging Platform

*The Arthrex Synergy MSK Ultrasound Imaging Platform Provides Unmatched Wireless Capabilities Without Sacrificing Image Quality...*

The Synergy MSK ultrasound provides limitless portability for real-time dynamic imaging of soft tissue, nerves, and bony structures in the clinic, on the sidelines, and even in the OR. This is achieved by simply launching the Clarius App for Synergy MSK ultrasound imaging platform to create a secure point-to-point connection with any iOS or Android mobile device or seamlessly transmit the image in the OR to the Synergy<sup>UHD4™</sup> imaging platform.

The Clarius App for the Synergy MSK ultrasound imaging platform uses the advances of technology to display high-resolution images with a simple, intuitive user interface. Quickly adjust the gain to customize image quality, based on patient anatomy, or allow the automated functions to optimize image quality.

DICOM compatibility facilitates storage of images on PACS servers or transmits images wirelessly to a secure cloud management system.



All patient/case details in demo screenshots are fictitious.



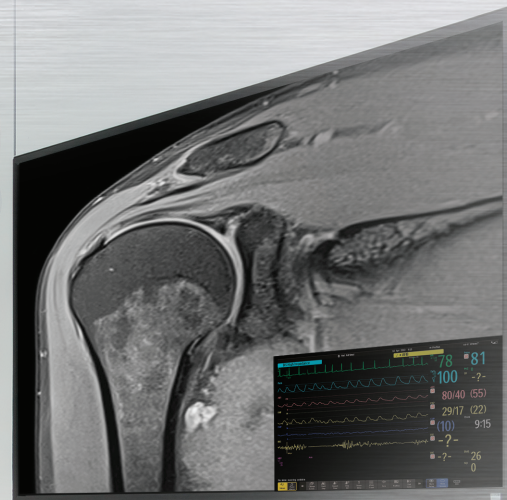
# Synergy Matrix™ Network

## *The World's First 4K OR Video Routing With Synergy Matrix*

Complementing the industry's first 4K camera system, Synergy<sup>UHD4™</sup> OR integration has never been more powerful or cost-effective. The Synergy Matrix network uses a 10 GB fiber-based network architecture to enable native 4K video distribution over IP and optimized OR workflow with a web-based interface.

In addition to true integration of 4K and legacy HD medical devices inside the operating room, the Synergy Matrix network enables connectivity and streaming from operating rooms to medical education rooms, auditoriums, or conference rooms anywhere in the world.

Seamlessly integrated with **Synergy.net™ management software**, expanded functionality includes central management of all surgeon preferences, multiroom scheduling, and direct EHR and PACS integration. Synergy Matrix networks are the only solution on the market that will truly future-proof the operating room.



All patient/case details in demo screenshots are fictitious.





# Revolutionizing Endoscopy

*Experience Open Surgery Clarity in Endoscopic Surgery*



The Arthrex 50L Synergy insufflator has an intuitive touchscreen interface and Synergy "heads-up display." The unit features high-flow and bariatric modes, integrated gas heating, venting system, and fluid sensor to prevent cross-contamination.

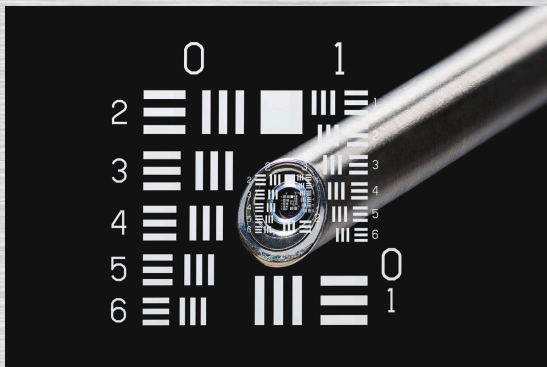
- Endoscope sizes available: 10 mm, 5 mm, 4.8 mm, 4 mm, 3 mm, 2.7 mm, 2.4 mm, 1.9 mm
- In-line, extended cord, and standard camera heads
- Multiple camera head couplers



Synergy<sup>UHD4™</sup> Tablet Controller



4K 4 mm C-Mount Arthroscope



Standard Air Force target used in the endobench for measuring the optical performance of the scopes. (Close-ups)



4K Synergy<sup>UHD4</sup> C-Mount Camera Head, autoclavable



4K Synergy<sup>UHD4</sup> Camera Head, autoclavable



4K Synergy<sup>UHD4</sup> C-Mount Inline Camera Head With Right Angle Coupler





[www.arthrex.com](http://www.arthrex.com)

...up-to-date technology  
just a click away

Please see <https://www.arthrex.com/privacy-policy>  
for additional information including Privacy Terms and Conditions.

© 2018 Arthrex, Inc. All rights reserved. LB1-00099-EN\_C