

DrillSaw Sports 400™ Power System the New Power in Orthopedics

Designed to perform orthopedic surgical procedures for sports medicine, long bone trauma, and distal extremities.



Arthrex® 



Drillsaw Max 600™ Power System

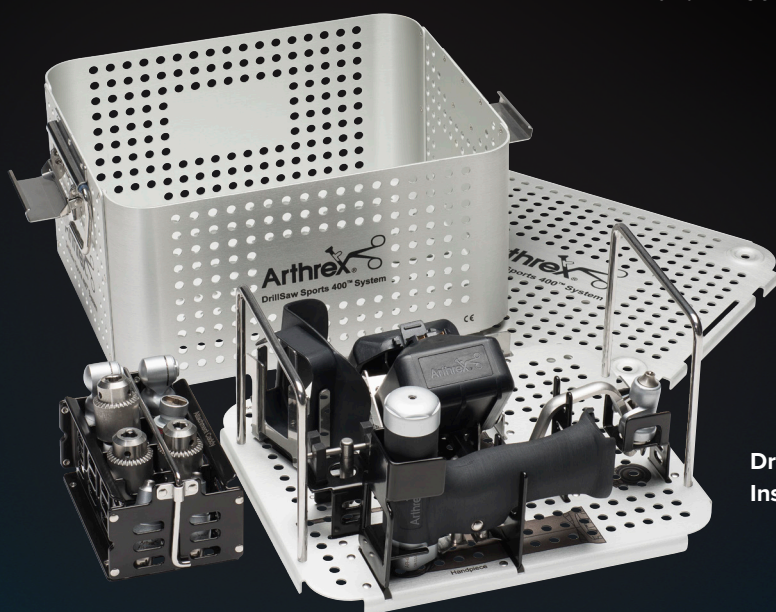
The Drillsaw Max 600 system is a fully modular large bone system for heavy-duty orthopedic procedures. This versatile system is perfect for facilities that perform an array of procedures from sports medicine to total joint arthroplasty.



Drillsaw Mini 300™ Power System

Lightweight and cord-free, it excels in small bone procedures including glenoid drilling, ACL reconstruction with BTB graft, Latarjet graft preparation, and small joint arthroplasty.

Universal Battery Charger
for AR-300, AR-400,
and AR-600 Batteries.



Drillsaw Sports 400™ System
Instrument Tray

www.arthrex.com

© 2019 Arthrex, Inc. All rights reserved. FL1-000085-en-US_A

